

Pharmacy Cross Time Change Manual

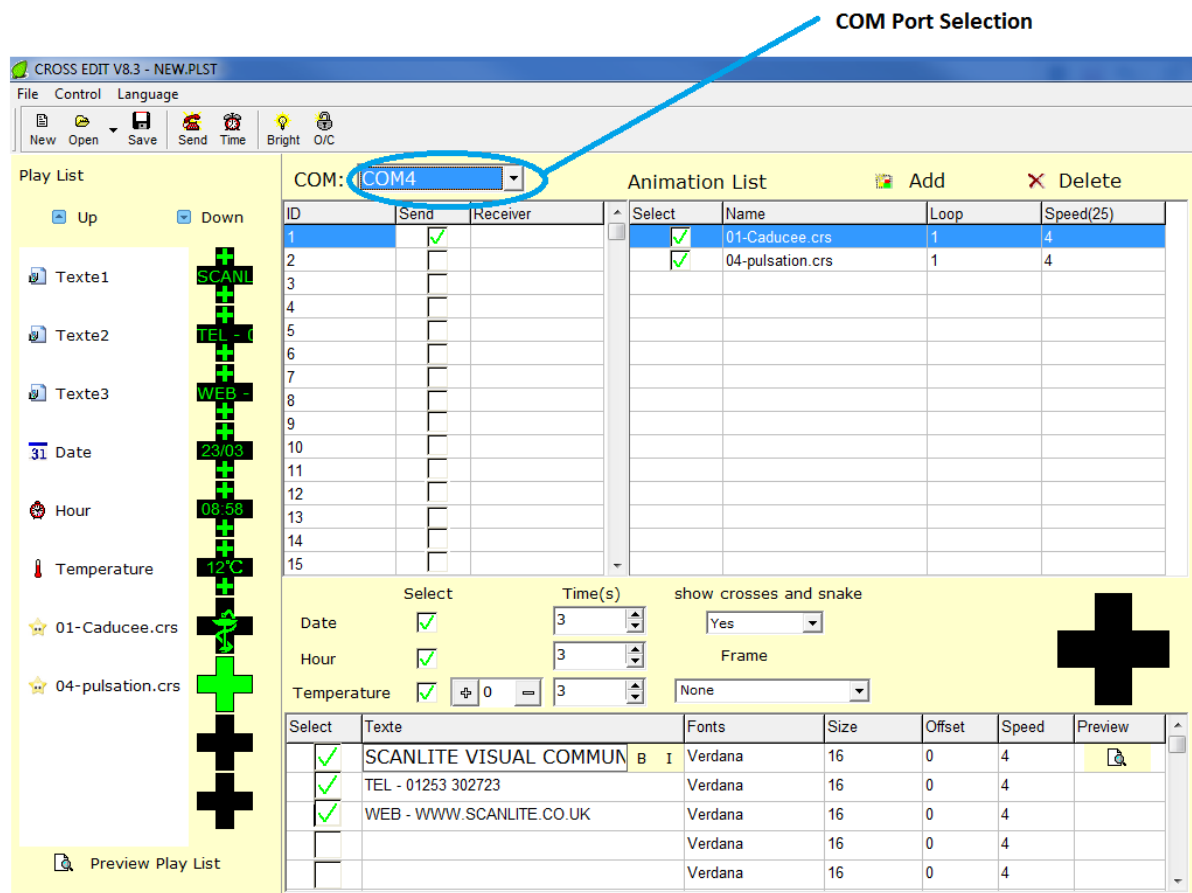
Issue 1.0 23/03/2018

Note: This Manual works with the following PC software

Cross Edit 8.3 (Mono, single & Bi colour cross)

Cross Edit 57600 (Full Colour cross)

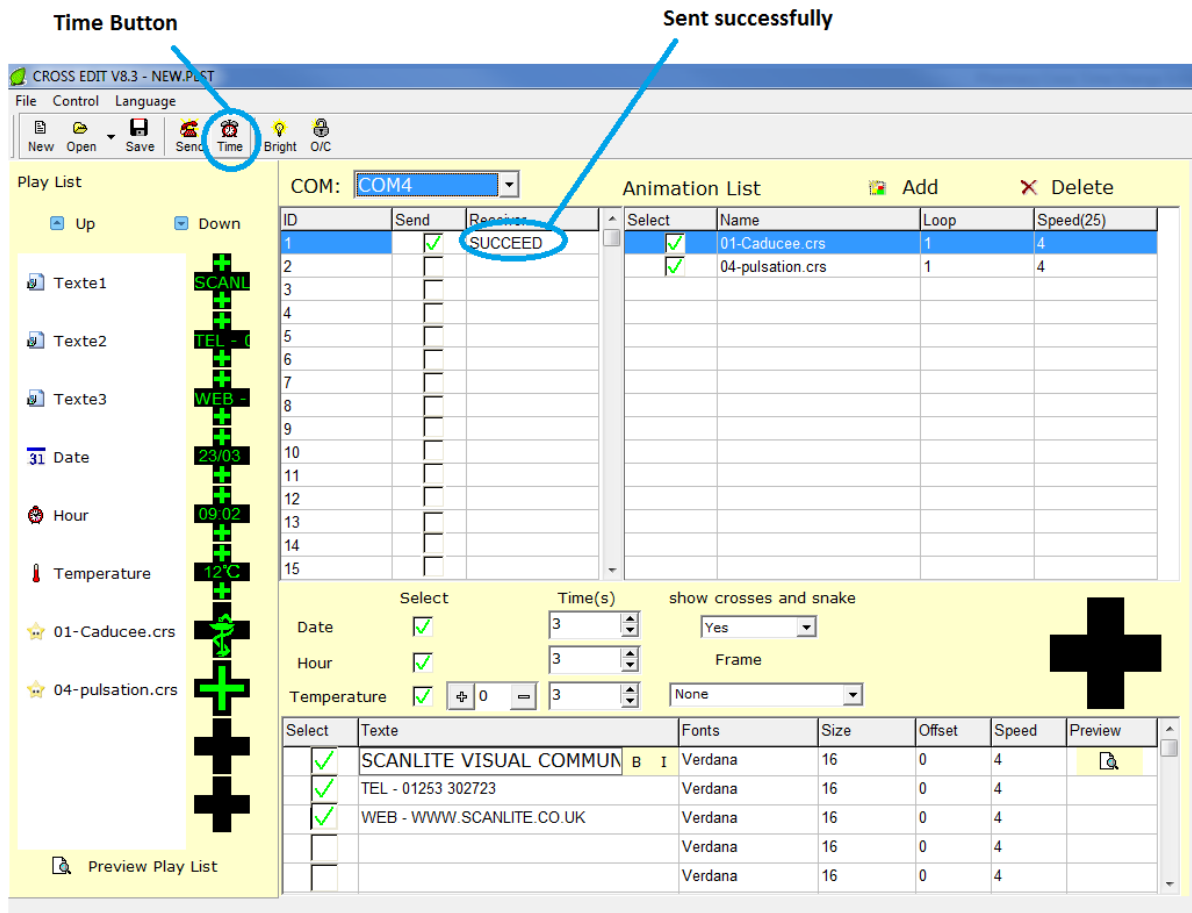
1. Before you open the software ensure that the commination lead (either Wireless adapter or serial lead) is plugged into one of the USB ports in your PC. The software should then automatically detect which COM port you are using for the device.
2. Check your PC clock is the correct time and date (this is where the software picks up the correct time)
3. Open your software (either Cross Edit 8.3 or Cross Edit 57600)
4. Check the COM port selection has selected the correct COM port for your device (see picture below) If it is not the correct Port then select the correct port from the drop down menu.



Pharmacy Cross Time Change Manual

Issue 1.0 23/03/2018

5. Click the Time button (indicated in the picture below) after a few seconds under the Receiver column, the message SUCCEED should come back. This indicates that the time on your pharmacy cross has changed.



Troubleshooting

If you get an ERROR in the receiver column please check that all cables are connected and that your cross is powered on. Also check that the current COM port is selected.

If you need new PC software or still can't change the time on your pharmacy cross then please contact service@scanlite.co.uk or ring 01253 302723 and let us know how we can help you.